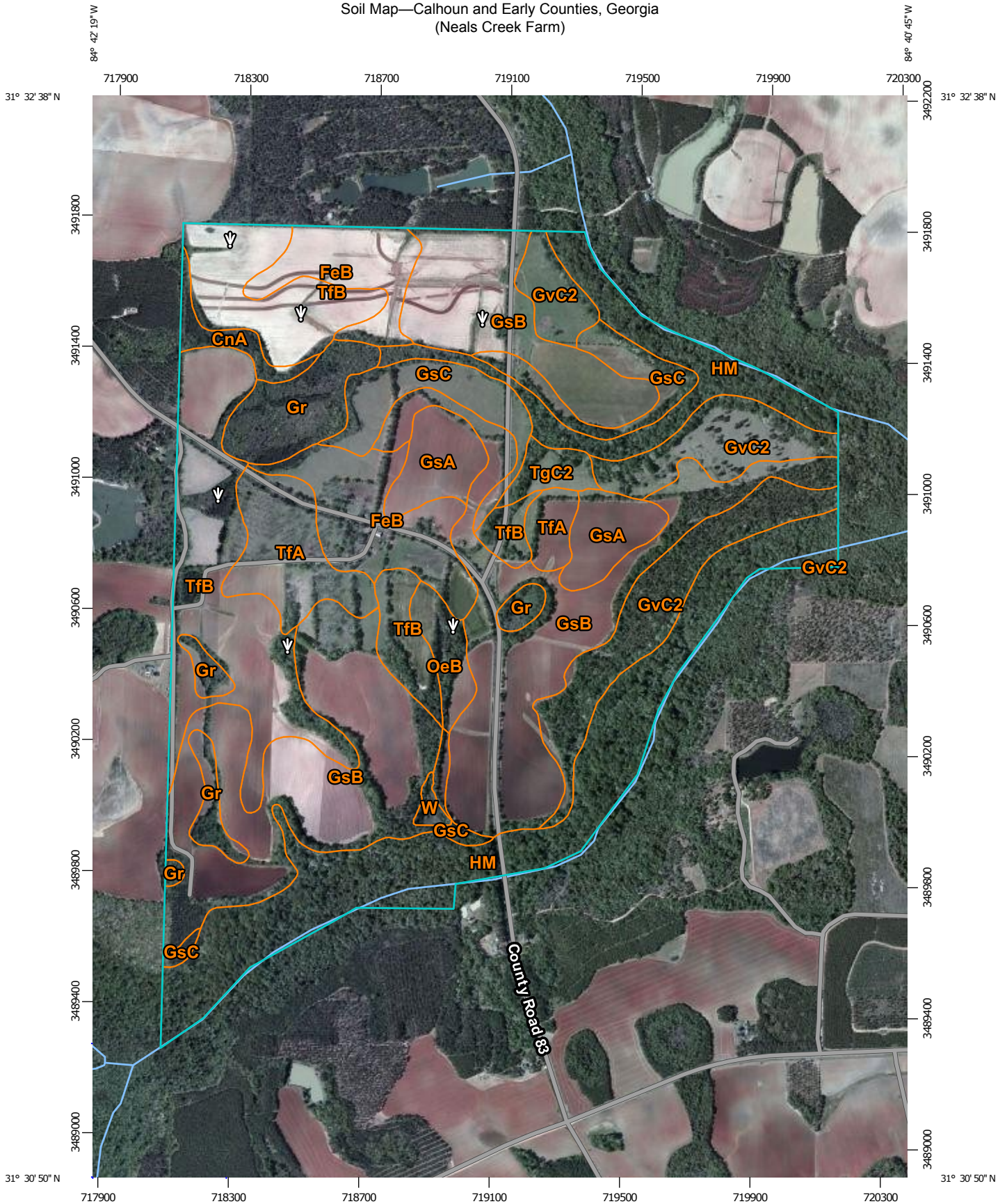


Soil Map—Calhoun and Early Counties, Georgia
(Neals Creek Farm)



Map Scale: 1:16,100 if printed on A portrait (8.5" x 11") sheet.



Map projection: Web Mercator Corner coordinates: WGS84 Edge tics: UTM Zone 16N WGS84



Natural Resources
Conservation Service

Web Soil Survey
National Cooperative Soil Survey

10/13/2014
Page 1 of 3

Map Unit Legend

Calhoun and Early Counties, Georgia (GA615)			
Map Unit Symbol	Map Unit Name	Acres in AOI	Percent of AOI
CnA	Clarendon loamy sand, 0 to 2 percent slopes	7.8	0.9%
FeB	Faceville sandy loam, 2 to 5 percent slopes	62.8	7.4%
Gr	Grady loam	39.0	4.6%
GsA	Greenville sandy loam, 0 to 2 percent slopes	31.3	3.7%
GsB	Greenville sandy loam, 2 to 5 percent slopes	248.0	29.2%
GsC	Greenville sandy loam, 5 to 8 percent slopes	44.8	5.3%
GvC2	Greenville sandy clay loam, 5 to 8 percent slopes, eroded	80.5	9.5%
HM	Herod-Muckalee association	145.4	17.1%
OeB	Orangeburg loamy sand, 2 to 5 percent slopes	11.0	1.3%
TfA	Tifton loamy sand, 0 to 2 percent slopes	38.1	4.5%
TfB	Tifton loamy sand, 2 to 5 percent slopes	131.2	15.4%
TgC2	Tifton sandy loam, 5 to 8 percent slopes, eroded	8.1	1.0%
W	Water	2.2	0.3%
Totals for Area of Interest		850.5	100.0%