

# Killingsworth Tract Calhoun County, GA

850.52 Taxed Acres

+831.2 GIS Acres

GIS Acres does not include  
public road right of ways

Tract#	Strata	Strata Descripti	GIS Acres+-
239	239101	MaPP	41.5
239	239102	2000PP	13.9
239	239301	MaBH	216.2
239	239302	1998BCO	42.4
239	239401	Field	451.4
239	239402	Pecan Grove	24.9
239	239403	WWP	11.1
239	239404	X	21.1
239	239405	Service	8.8

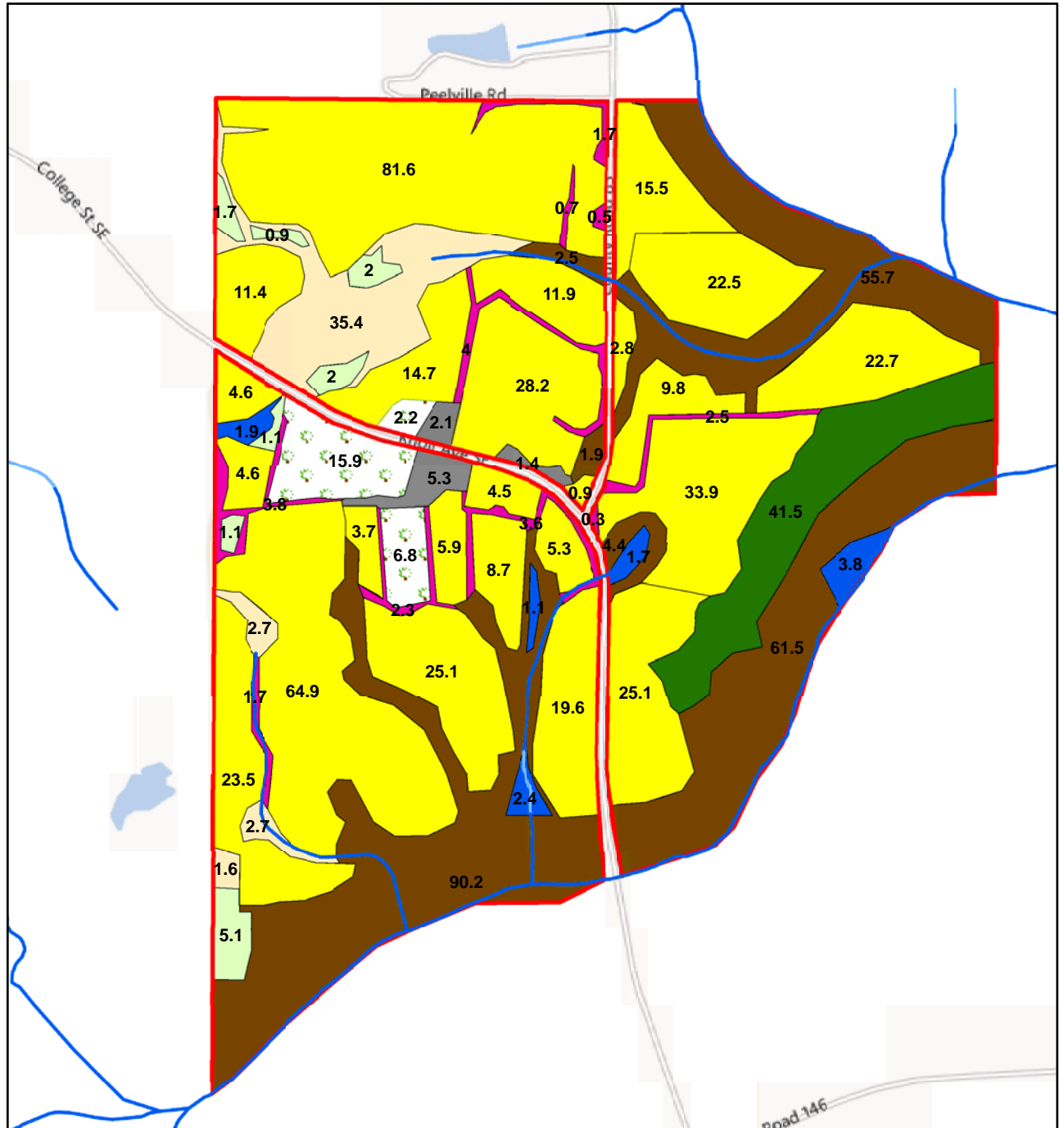
Key:  
 MaPP = Mature Planted Pine  
 2000PP = +-2000 Planted Pine  
 MaBH = Mature Lowland/Bottomland Hardwood  
 1998BCO = +-1998 Bottomland Cutover  
 Field = Plantable  
 WWP = Wet Weather Pond  
 X = Hedgerows, Non-Productive Areas  
 Service = Old Barns, Homes, Working Pens

## Legend

### LandUse

### Strata, StrDescrip

- 239101, MaPP
- 239102, 2000PP
- 239301, MaBH
- 239302, 1998BCO
- 239401, Field
- 239402, Pecan Grove
- 239403, WWP
- 239404, X
- 239405, Service



Mapped 11/19/13 by Mike Matre in ArcView  
 GIS.  
[www.matreforestry.com](http://www.matreforestry.com) (229) 639-4973

0 330 660 1,320 Feet

1 in = 1,320 ft  
 1:15,840

Disclaimer: The map information is not guaranteed.  
 The property lines are approximate, and are based  
 on the tax map, not a survey or deed description.