

NUM	DISTANCE	BEARING
L1	47.89	N84°53'48"W
L2	90.61	N65°58'07"W
L3	42.37	N81°05'57"W
L4	27.46	N37°07'43"E
L5	43.78	N35°58'01"E
L6	54.00	N29°33'40"E
L7	65.40	N57°09'04"E
L8	65.34	N72°54'06"E
L9	32.37	N47°46'12"E
L10	78.18	N31°20'22"E
L11	41.87	N10°07'50"E
L12	74.69	N39°28'44"E
L13	47.08	N43°18'08"E
L14	90.58	N89°09'18"E
L15	32.45	N52°28'42"E
L16	39.98	N62°48'47"E
L17	101.19	S72°08'45"E
L18	90.85	S85°54'12"E
L19	86.68	N76°07'51"E
L20	88.68	N67°32'40"E
L21	60.77	N74°16'19"E
L22	67.64	S78°57'19"E
L23	64.33	S88°28'00"E
L24	68.82	N78°53'44"E
L25	60.28	N54°23'31"E
L26	70.64	N66°48'43"E
L27	24.92	N55°17'40"E
L28	20.31	N50°39'22"E
L29	31.90	N45°57'03"W

NUM	DISTANCE	BEARING
L30	57.98	N36°03'03"E
L31	42.97	N60°00'44"E
L32	47.16	N47°04'22"E
L33	43.65	N23°01'31"E
L34	47.83	N65°36'59"E
L35	47.64	N30°17'35"E
L36	59.08	S87°28'35"E
L37	146.28	N88°50'22"E
L38	54.75	N74°51'16"E
L39	80.94	N42°31'43"E
L40	82.28	N22°33'28"E
L41	57.87	N48°53'44"E
L42	126.53	N70°13'15"E
L43	128.08	N85°12'05"E
L44	75.40	N73°18'21"E
L45	112.41	N80°49'42"E
L46	68.02	N74°30'17"E
L47	51.78	N85°59'12"E
L48	27.38	S70°06'31"E

NUM	DISTANCE	BEARING
C1	193°28'18"	285.84'
C2	28°47'17"	128.16'
C3	310°19'	71.08'

NUM	DISTANCE	BEARING
R1	833.94'	N34°49'54"W
R2	251.00'	N38°24'08"W
R3	1284.00'	N85°22'59"W



VERANDA in the Clerk's Office of the Circuit Court of Franklin County, _____ at _____
 This Map received in office, and submitted to _____
 ALEX S. HALL, CLERK
 Clerk-Deputy Clerk

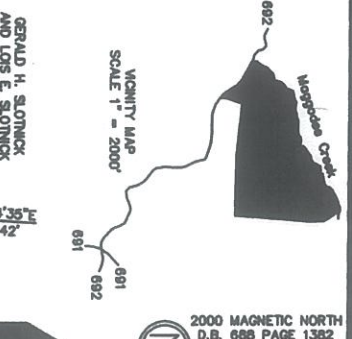
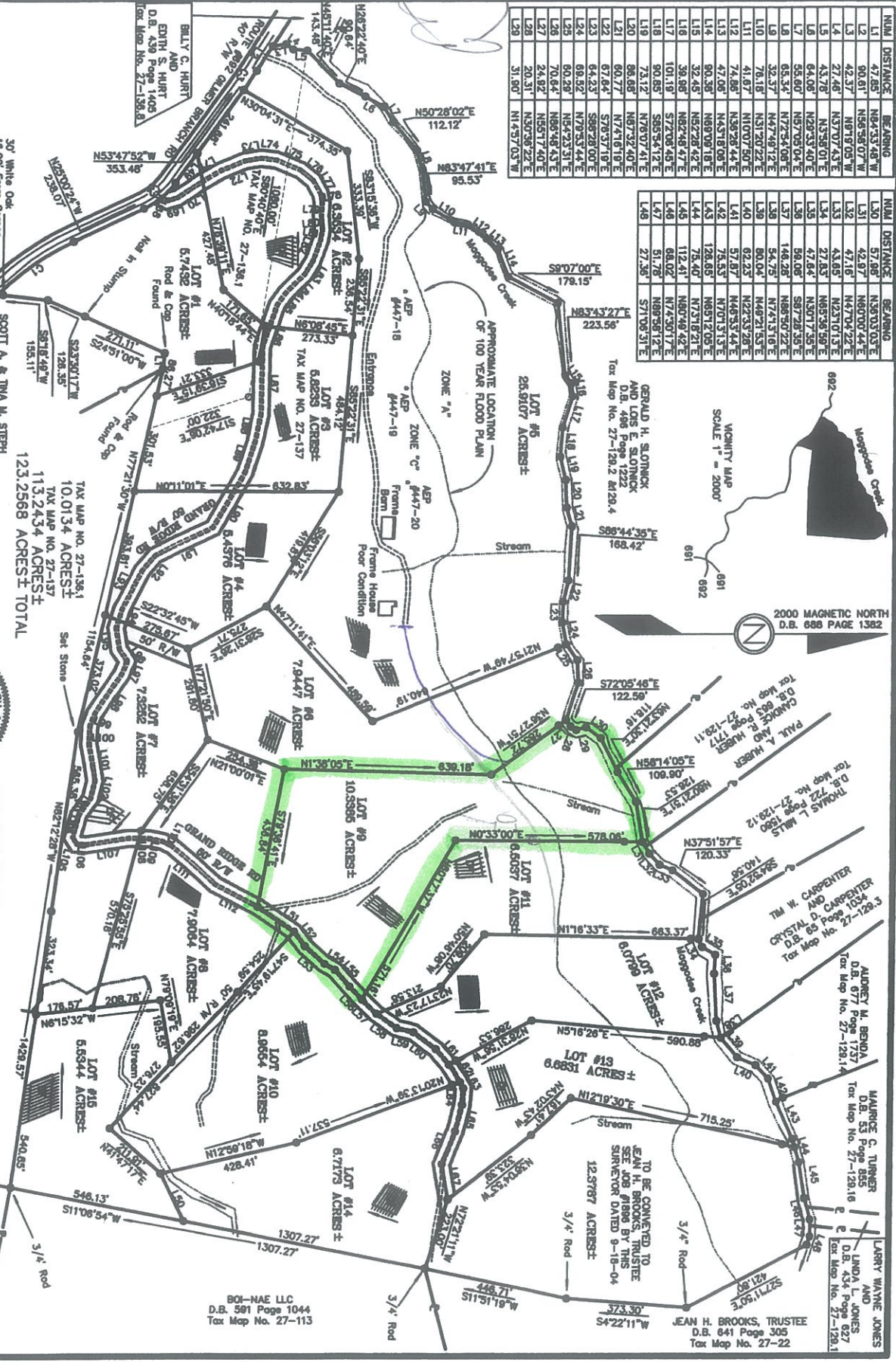
BOONE MARSHALL DISTRICT
 FRANKLIN COUNTY, VIRGINIA
 SCALE 1" = 200'
 DECEMBER 17, 2004
JENNINGS L. BOLT, LS
 FLOTO, VIRGINIA 24081

BILLY BOB LARRADE
 AND
LINDA P. LARRADE
 D.B. 248 Page 248
 Tax Map No. 27-138

CARL H. BARNHART
 D.B. 264 Page 126
 Tax Map No. 27-126

BOB MAE LLC
 D.B. 581 Page 1044
 Tax Map No. 27-113

BOB T. LAND SURVEYING
 107 HARRIS HOLLOW RD SW
 FLOTO, VIRGINIA 24891
 TELEPHONE 540-789-7531



2000 MAGNETIC NORTH
 D.B. 668 PAGE 1382

GERALD H. SLOINICK
 AND
LOIS E. SLOINICK
 D.B. 488 Page 1222
 Tax Map No. 27-12812 81284

CANDICE R. HUBER
 AND
PUL A. HUBER
 D.B. 860 Page 1717
 Tax Map No. 27-12811

THOMAS L. MILLS
 D.B. 722 Page 1580
 Tax Map No. 27-12812

TM W. CARPENTER
 AND
CRYSTAL D. CARPENTER
 D.B. 85 Page 1524
 Tax Map No. 27-12813

ADREY M. BENJIA
 D.B. 677 Page 1737
 Tax Map No. 27-12814

MAURICE C. TURNER
 D.B. 53 Page 885
 Tax Map No. 27-12816

LARRY WAYNE JONES
 AND
LINDA A. JONES
 D.B. 434 Page 827
 Tax Map No. 27-12811

JEAN H. BROOKS, TRUSTEE
 D.B. 641 Page 305
 Tax Map No. 27-22