



"Your One Stop Real Estate Shop"

LAND & TIMBER | RESIDENTIAL | COMMERCIAL | OIL & GAS

- * ONLY \$80,000.00
- * 35.66 acres +/-
- * Great Location
- * Hunting or Homesites

Steel Creek Property

35.66 acres +/- weekend get-a-way or homesites

- Young Pine and Hardwoods
- Live Steel Creek
- Power
- Food plots
- Interior Roads
- Abundant Wildlife
- Address: 1080 Pleasant Ln, Georgetown, MS
- Minutes from Jackson or SE LA



Gary W. Stewart

MOBILE: 601-757-3009

gwstewart@4cornerprop.com

Office: 601-990-2132

Fax: 601-510-9446

www.4cplandandhomes.com



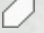
A Real Must See!



Copiah 35

1080 Pleasant Ln, Georgetown, MS

Legend

 Copiah 35

Georgetown

Lee Bass Rd

Biggeport Rd

Lower Rockport Rd

Rockport New Union Rd



Google Earth

© 2018 Google

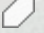
3 mi

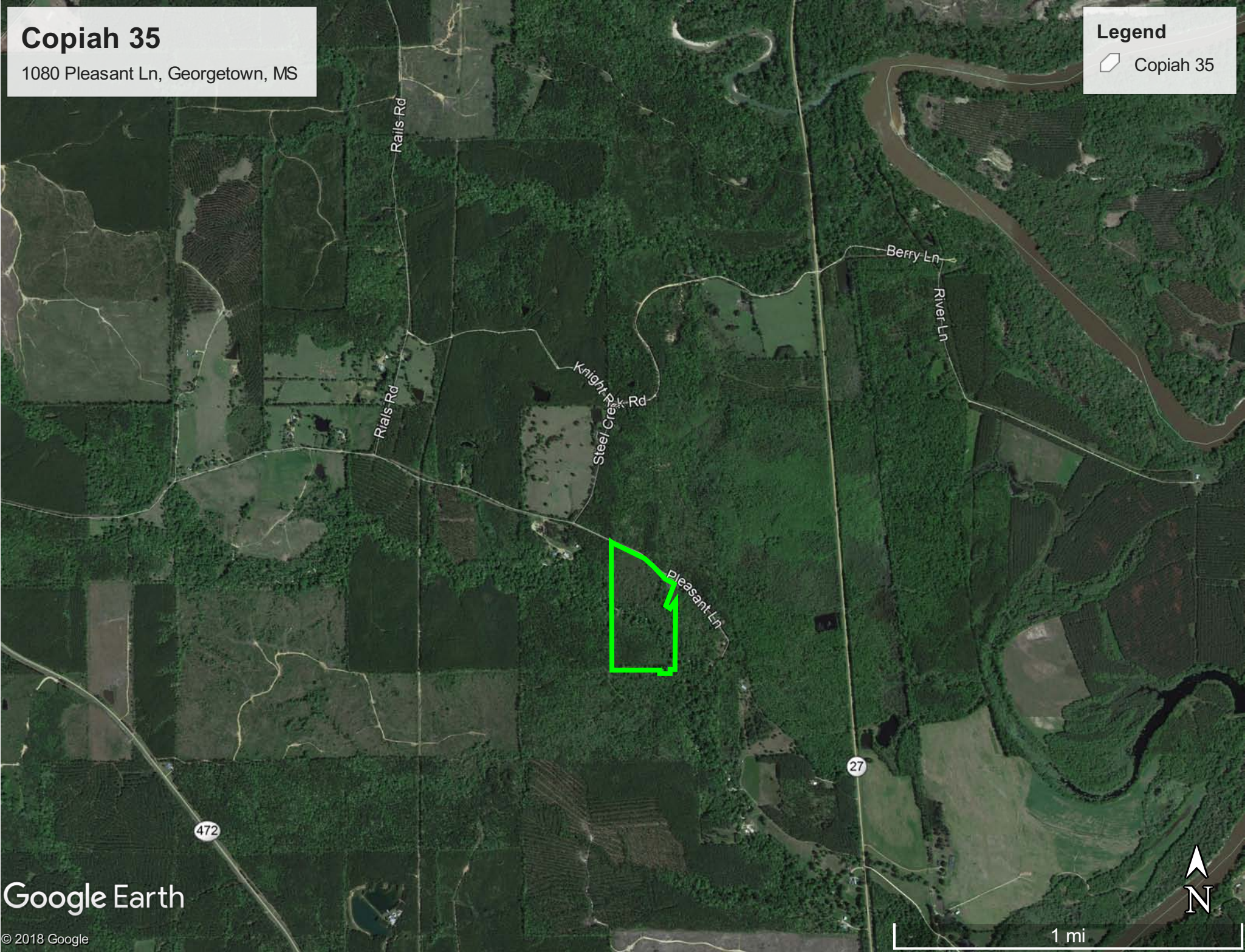


Copiah 35

1080 Pleasant Ln, Georgetown, MS

Legend


 Copiah 35

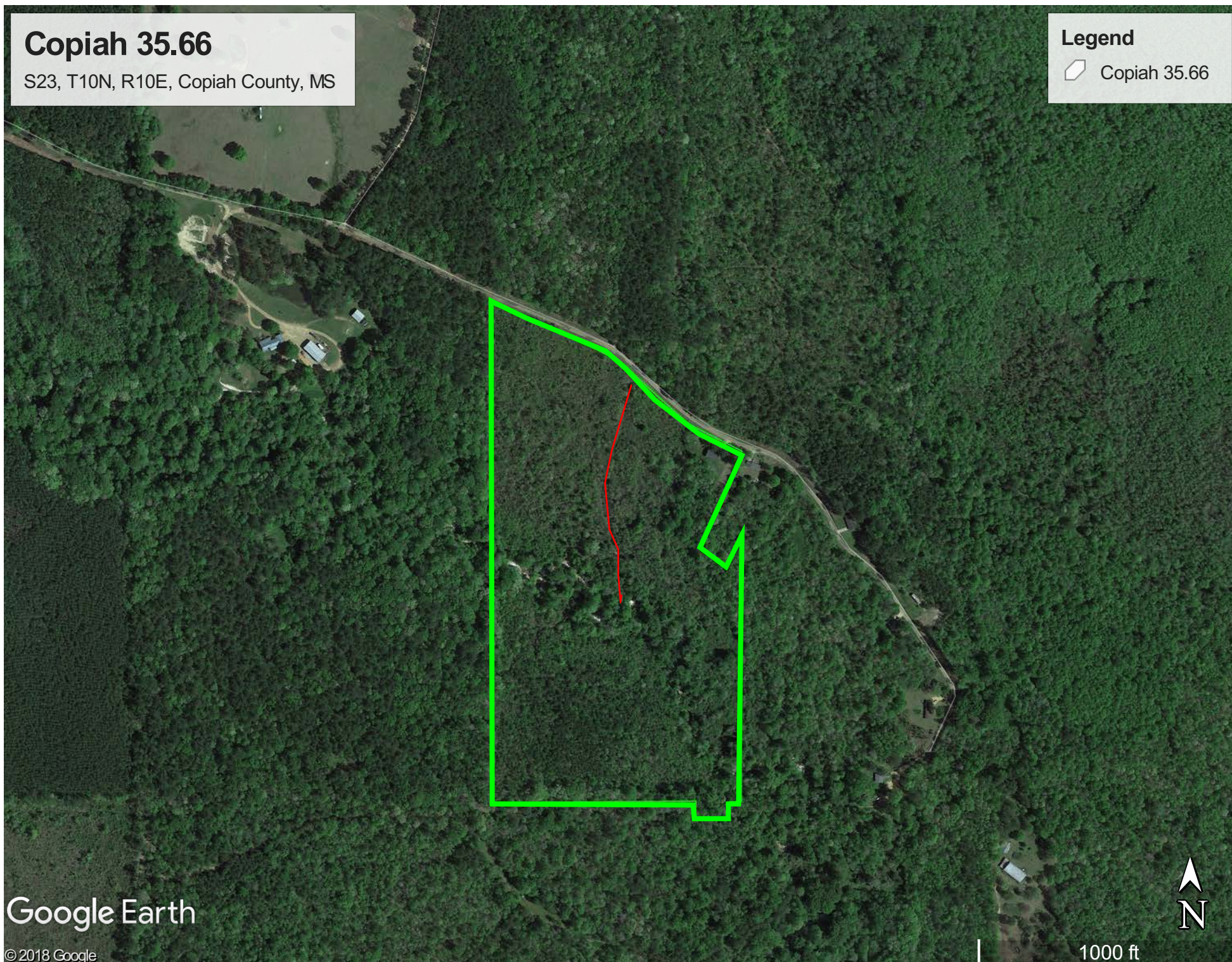


Copiah 35.66

S23, T10N, R10E, Copiah County, MS

Legend

 Copiah 35.66



Google Earth

© 2018 Google




1000 ft

Copiah 35

1080 Pleasant Ln, Georgetown, MS

Legend

 Copiah 35

