

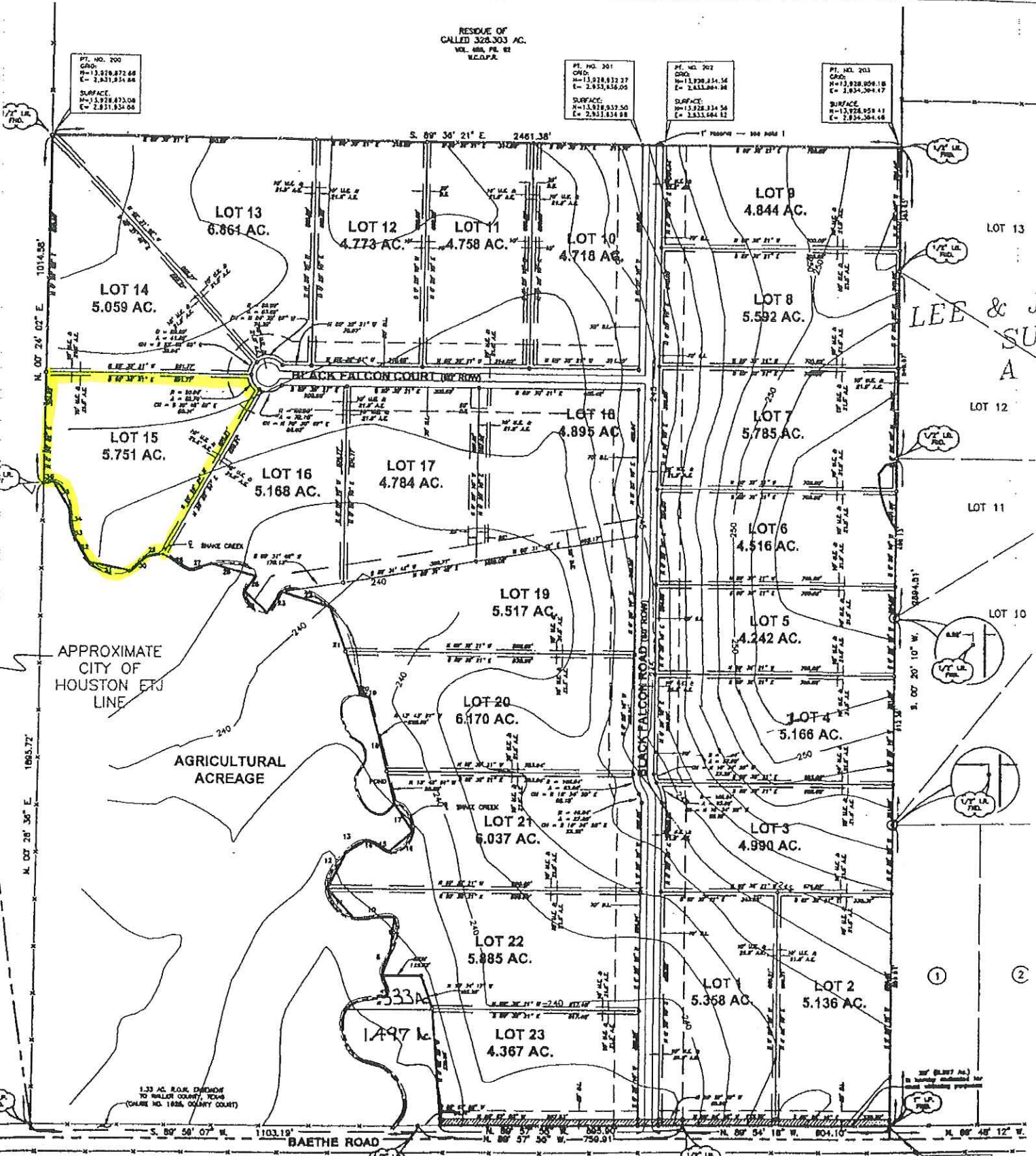
RESIDUE OF
CALLED 328.303 AC.
VOL. 188, P. 82
W.C.O.P.A.

PT. NO. 200
GRID
N=13,928,872.66
E= 2,831,834.66
SURFACE
N=13,928,873.08
E= 2,831,834.08

PT. NO. 201
GRID
N=13,928,872.37
E= 2,831,835.05
SURFACE
N=13,928,837.50
E= 2,831,834.98

PT. NO. 202
GRID
N=13,928,834.36
E= 2,831,834.36
SURFACE
N=13,928,834.36
E= 2,831,834.12

PT. NO. 203
GRID
N=13,928,854.18
E= 2,834,304.47
SURFACE
N=13,928,854.11
E= 2,834,304.48



APPROXIMATE
CITY OF
HOUSTON ETJ
LINE

AGRICULTURAL
ACREAGE

LEE & J
SU
A

POLLY PERRY LEAGUE
A - 236

1.33 AC. ROAD EASEMENT
TO HALLER COUNTY, TEXAS
(CHASE NO. 1826, COUNTY COURT)

1/2" U.L. FID.

PT. NO. 205
GRID
N=13,928,040.82
E= 2,833,853.88
SURFACE
N=13,928,040.82
E= 2,833,853.82

PT. NO. 204
GRID
N=13,928,268.81
E= 2,834,158.91
SURFACE
N=13,928,268.81
E= 2,834,158.81

GRID COORDINATES BY
SURFACE COORDINATE
POSITION OF PT. NO.