



Missouri Tillable/Vacant Land for Sale - Ralls County

T R O P H Y
PROPERTIES AND AUCTION
LAND | RECREATIONAL | RESIDENTIAL

www.TrophyPA.com • (855) 573-5263 • leads@trophy.com



PROPERTY ADDRESS:

00 Route A
New London, MO 63459

PRICE: \$69,900

ACRES: 9.85

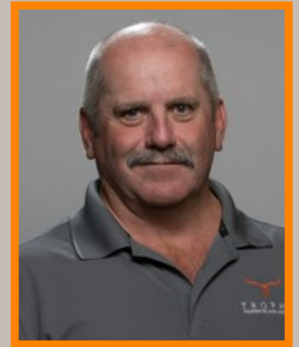
COUNTY: Ralls

PROPERTY HIGHLIGHTS:

- Road frontage on 2 sides
- All tillable
- Possible building site

PROPERTY DESCRIPTION:

9.85 +/- acres of open ground that can be farmed or would provide an excellent building spot. This farm has some blacktop frontage and 1/4 mile of gravel frontage. This is a nice location at the intersection of Route A & Pawnee Drive for any possible use.



PRESENTED BY:

FRANK WALLACE

Land Specialist - MO

M: (573) 470-0779

P: (855) 573-5263 x718

E: fwallace@trophy.com

Trophy Properties and Auction

15480 Clayton Road
Suite 101

Ballwin, MO 63011

www.Trophy.com

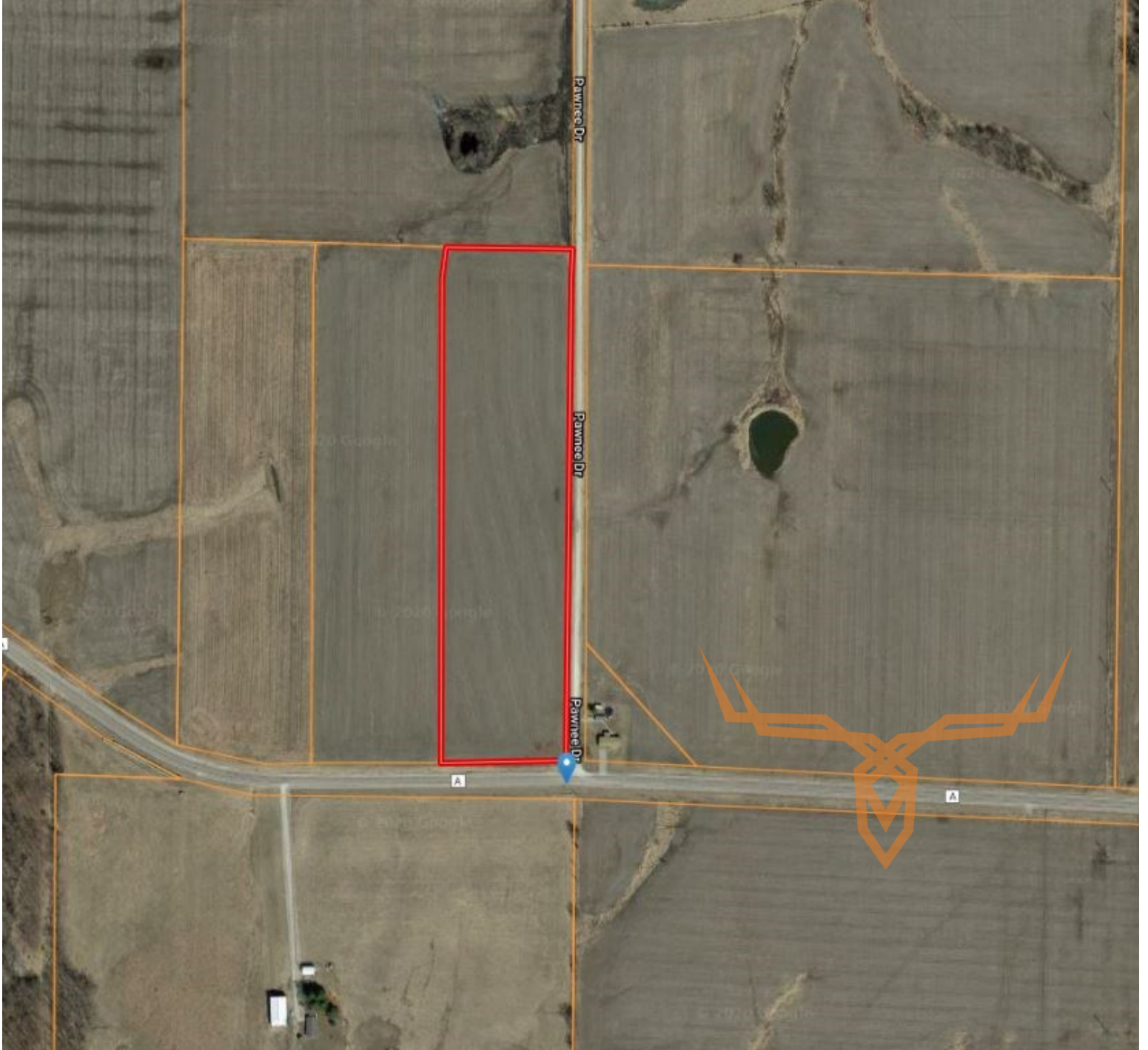
leads@trophy.com



Missouri Tillable/Vacant Land for Sale - Ralls County

T R O P H Y
PROPERTIES AND AUCTION
LAND | RECREATIONAL | RESIDENTIAL

www.TrophyPA.com • (855) 573-5263 • leads@trophy.com



Broker does not guarantee the accuracy of sq. ft., lot size, or other information, buyer is advised to independently verify the accuracy of information through personal inspection and with appropriate professionals