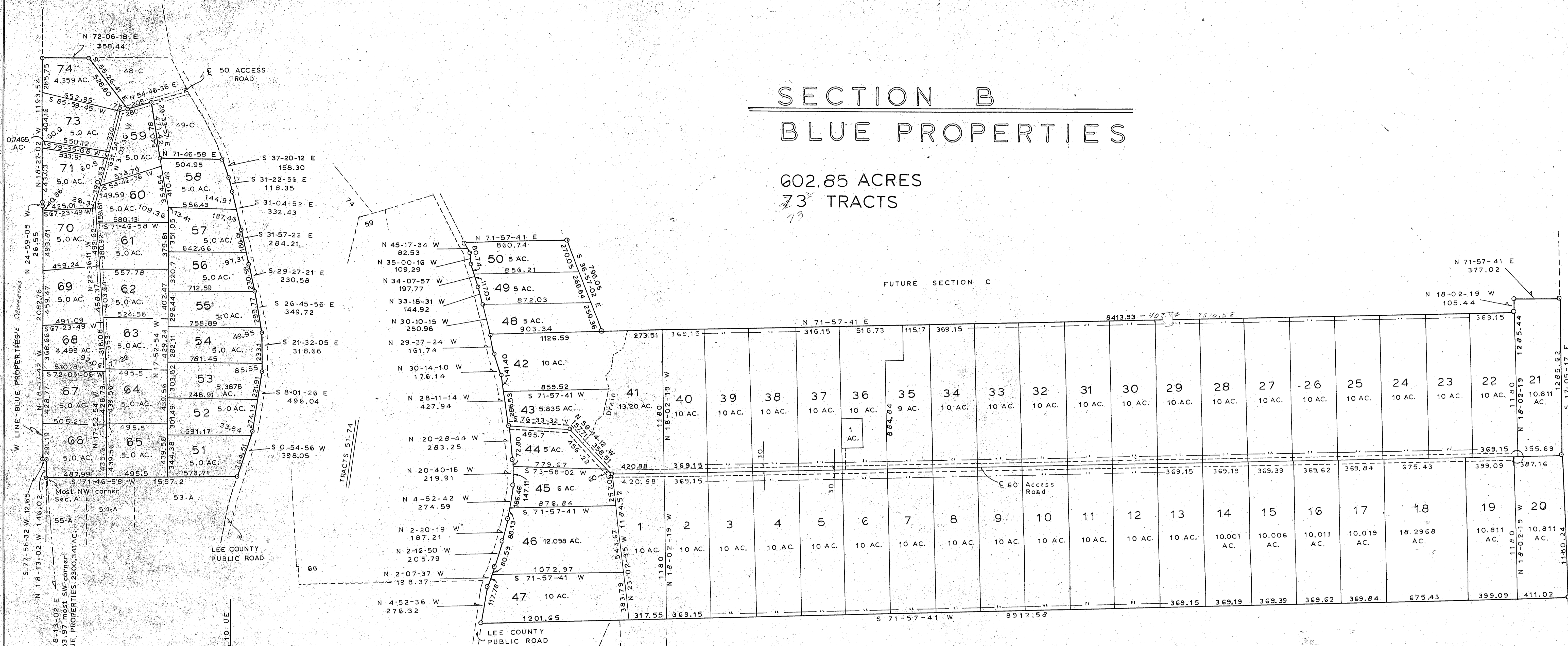


# SECTION B BLUE PROPERTIES

602.85 ACRES  
73 TRACTS

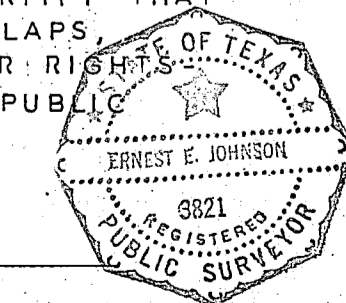


SECTION A BLUE PROPERTIES

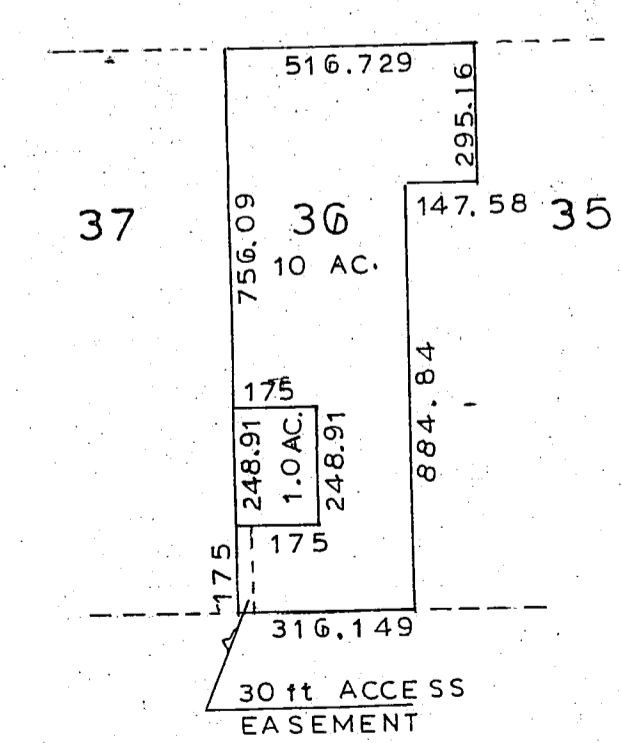
NOTE  
ALL CUL-D-SACS SHOWN HAVE  
A 50 FT RADIUS

THE UNDERSIGNED DOES HEREBY CERTIFY THAT THIS PLAT/MAP IS A CORRECT REPRESENTATION OF SURVEYS MADE ON THE LANDS SHOWN. I ALSO CERTIFY THAT ALL CORNERS ARE LOCATED ON THE GROUND, THAT THERE ARE NO OVERLAPS, SHORTAGE IN ACREAGE SHOWN, ENCROACHMENTS, KNOWN EASEMENTS OR RIGHTS OF-WAY UNLESS SHOWN, AND THAT THESE LANDS HAVE ACCESS TO A PUBLIC ROAD AS SHOWN.

*E. E. Johnson*  
E. E. JOHNSON, P.E. 9114, R.P.S. 3821



TRACT 36 DETAIL



FILED  
10:35 A.M.  
MAY 2 1986  
*Carol Dismukes*  
COUNTY CLERK  
LEE COUNTY, TEXAS

TYPICAL  
ACCESS ROAD & UTILITY  
EASEMENTS

SECTION B BLUE PROPERTIES  
A PROJECT OF:  
**FIRST TEXAS EQUITIES INC.**  
HIRAM DONAHOO SURVEY, A-87  
LEE COUNTY, TEXAS

**E. E. JOHNSON & ASSOCIATES**  
ENGINEERS - SURVEYORS  
CALDWELL TEXAS

Revised 5-14-85  
Revised 2-9-85  
DRAWN BY: *E. E. Johnson*  
DESIGNED BY:

v. 449 pg 65