

**SURVEY FOR U.S. DEPARTMENT OF AGRICULTURE FOREST SERVICE**  
 IN SECTION 5, TOWNSHIP 14 SOUTH, RANGE 11 WEST, WILLAMETTE MERIDIAN, LINCOLN COUNTY, OREGON BY REGIONAL CONSULTANTS, INC. 2380 N.W. KINGS BLVD. CORVALLIS, OREGON 97330

NARRATIVE SECTION 5

THE FOLLOWING NARRATIVE PERTAINS TO THE SUBDIVISION OF SECTION 5, TOWNSHIP 14 SOUTH, RANGE 11 WEST OF THE WILLAMETTE MERIDIAN, LOCATED IN LINCOLN COUNTY, OREGON. THE SURVEY WAS MADE FOR THE UNITED STATES FOREST SERVICE (CONTRACT #53-04H1-0-7710 N) BLODGETT 002 CADASTRAL SURVEY.

THE BASIS OF BEARING WAS DETERMINED BY A SOLAR OBSERVATION ON 27 DECEMBER 1979, LOCAL TIME 21 24 05, STANDARD TIME 21 40 17, DECLINATION OF THE SUN -23°19'25", REFRACTION -00°02'25", LATITUDE 44°22'04" NORTH, VERTICAL ANGLE 19°41'11", HORIZONTAL ANGLE 177°08'30". TRANSIT WAS SET UP ON THE TRAVERSE POINT #32 WHICH IS NORTH 54°45'37" WEST 1317.92 FEET FROM THE SOUTHWEST CORNER OF SECTION 5, WITH POINT #31 AS THE BACKSIGHT.

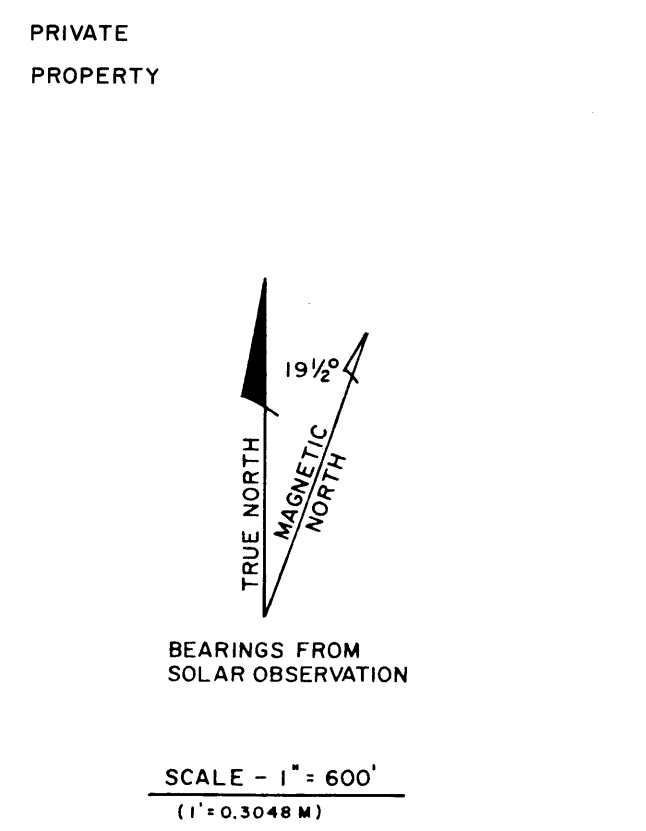
THE NORTH AND WEST BOUNDARIES OF THE TOWNSHIP WERE SURVEYED BY GEORGE S. MERCER IN 1879. IN 1892 CHARLES H. COLLIER SURVEYED THE SUBDIVISIONAL LINES (SECTION LINES) AND RESURVEYED PARTS OF THE NORTH AND WEST BOUNDARIES OF THE TOWNSHIP. JAMES E. JELLEY OF THE BUREAU OF LAND MANAGEMENT SET CERTAIN CORNERS FROM ORIGINAL EVIDENCE WITHOUT SURVEY IN 1966. THE STANDARD CORNER TO SECTIONS 32 AND 33, TOWNSHIP 13 SOUTH, RANGE 11 WEST, WAS RESET BY DAVID M. O'DONNELL, JR., L.S. #266. IN ACCORDANCE WITH THE MERCER FIELD NOTE, THIS CORNER WAS ESTABLISHED ON LINE BETWEEN THE STANDARD 1/4 CORNER OF SECTION 33 AND THE STANDARD CORNER BETWEEN SECTIONS 31 AND 32, AND 4 CHAINS WEST OF ECKMAN CREEK. THIS POINT WAS SUBSEQUENTLY PERPETUATED BY WILLIAM A. EIMSTAD, L.S. #377. IN 1971 WITH A BRASS CAP WILLIAM A. EIMSTAD, L.S. #377, ALSO PERPETUATED THE STANDARD 1/4 CORNER OF SECTION 33, TOWNSHIP 13 SOUTH, RANGE 11 WEST, AND SET THE EAST AND WEST 1/16 CORNERS ON THE SOUTH LINE OF SAID SECTION 33. ALSO PERPETUATED WAS THE ORIGINAL CLOSING CORNER FOR SECTIONS 4 AND 5, TOWNSHIP 14 SOUTH, RANGE 11 WEST IN 1971. THE BUREAU OF LAND MANAGEMENT RETURNED AGAIN IN 1972. UNFORTUNATELY THEY DID NOT FIND THE ORIGINAL CLOSING CORNER TO SECTIONS 5 AND 6 AND THE ORIGINAL CORNER TO SECTIONS 4, 5, 8 AND 9. THESE TWO CORNERS WERE SUBSEQUENTLY FOUND DURING THIS SURVEY. THEREFORE, ALL CORNERS SET BY THE BUREAU OF LAND MANAGEMENT IN 1972 ARE IN ERROR BY DEFINITION.

THE SURVEY WAS INITIATED IN DECEMBER 1979 BY RUNNING A CLOSED RANDOM TRAVERSE CONNECTING ALL THE THEN EXISTING MONUMENTS. THIS PRODUCED SOME INTERESTING DISCREPANCIES--A LOT OF THE DISTANCES WERE OFF 3-4 FEET FROM THE BUREAU OF LAND MANAGEMENT MEASUREMENTS AND NOT CONSISTENTLY LONG OR SHORT. AFTER TALKING TO THE FOREST SERVICE REPRESENTATIVE, IT WAS DECIDED TO SEARCH FOR ALL THE CORNERS THAT THE BUREAU OF LAND MANAGEMENT SET BY PROPORTIONATE MEASURE THAT WOULD HAVE BEEN SET IN THE ORIGINAL SURVEY. THE FOREST SERVICE PERSONNEL FOUND THE ORIGINAL CLOSING CORNER BETWEEN SECTIONS 5 AND 6 APPROXIMATELY 30 FEET NORTH AND EAST OF WHERE THE BUREAU OF LAND MANAGEMENT HAD DETERMINED THE CORNER TO BE. THE SOUTHEAST SECTION CORNER OF SECTION 5 WAS ALSO FOUND ABOUT 13 FEET SOUTH AND EAST OF THE CORNER AS DETERMINED BY THE BUREAU OF LAND MANAGEMENT. WE ALSO FOUND A 1" IRON PIN NEAR THE EAST 1/4 CORNER OF SECTION 5 FROM AN UNRECORDED SURVEY DONE BY L.P. BRAGINGTON IN 1956 FROM TWO BLOWN DOWN TREES IN WHICH HE FOUND NO SCRIBE MARKS. HE CHECKED BACK AND FOUND A 60" FIR LINE TREE WHICH, ACCORDING TO HIS NOTES, MATCHED THE TREES FAIRLY WELL. FROM WHERE HE SET HIS IRON PIN, ONE TREE MATCHES THE CALL FAIRLY WELL, THE OTHER TREE'S EXISTING ROOT HOLE APPEARS TO BE 5-10 FEET SHORT OF ITS DISTANCE. ALSO, CHECKING BACK FROM THE PIN, THE LINE TREE SHOULD FALL APPROXIMATELY 20 FEET SOUTH OF A ROAD USING THE CALL DISTANCE. NO EVIDENCE OF A 60" FIR WAS FOUND SOUTH OF THE ROAD. THE CALCULATED POSITION FOR THE LINE TREE LANDS IN THE MIDDLE OF THE ROAD. THE CALL DISTANCES TO THE CREEKS TO THE NORTH AND SOUTH OF THE 1/4 CORNER WERE OFF APPROXIMATELY 100 FEET. THE OVERALL DISTANCE BETWEEN THE ORIGINAL CLOSING CORNER AND THE SECTION CORNER BETWEEN SECTIONS 4 AND 5 IS ONLY ABOUT 6 FEET DIFFERENCE FROM THE ORIGINAL DISTANCE. TAKING ALL THIS INTO ACCOUNT, IT WAS DECIDED THAT THE IRON PIN WAS NOT IN THE ORIGINAL POSITION OF THE 1/4 CORNER AND THE CORNER WAS REESTABLISHED BY PROPORTIONATE MEASURE. WE ALSO FOUND A 1" PIPE SET BY L.P. BRAGINGTON IN 1956 (ALSO UNRECORDED) NEAR THE SOUTH 1/4 OF SECTION 5. THERE WAS NO EVIDENCE OF ANY ORIGINAL BEARING TREES AND THE CALL DISTANCES TO THE NEAREST TOPOGRAPHIC FEATURES WERE OFF BY ABOUT 60 FEET. AFTER FURTHER LOOKING, NO EVIDENCE OF THE ORIGINAL BEARING TREES WAS FOUND, SO THIS 1/4 CORNER WAS ALSO SET BY PROPORTIONATE MEASURE. POSITIONS FOR ALL CORNERS ON THE OUTSIDE BOUNDARY WERE THEN COMPUTED FROM THE POSITIONS OF ALL EXISTING ORIGINAL CORNERS (BY PROPORTIONATE MEASURE). THESE COMPUTED POSITIONS WERE THEN USED TO FURTHER SUBDIVIDE THE SECTION.

THE CENTER OF THE SECTION WAS CALCULATED BY A BEARING-BEARING INTERSECTION FROM THE OPPOSITE 1/4 CORNERS. THE ORIGINAL LENGTH OF THE CENTER LINE (NORTH 1/4 TO SOUTH 1/4) WAS CALCULATED BY DETERMINING THE DIMENSIONS OF THE FRACTIONAL LOTS TO THE EAST AND WEST OF THE CENTER LINE, USING THE COORDINATES AND AVERAGING THE TWO DIMENSIONS FOR THE COMMON LINE.

ALL INTERIOR 1/16 CORNERS WERE THEN COMPUTED BY PROPORTIONATE MEASURE OR BEARING-BEARING INTERSECTION.

A CLOSED RANDOM TRAVERSE WAS THEN RUN BETWEEN THE FOREST SERVICE AND PRIVATE PROPERTY FOR POSTING AND MONUMENTATION PURPOSES. OFFSETS WERE THEN CALCULATED FOR THE POSTING OF THE FOREST SERVICE BOUNDARY. THE POSTS WERE SET USING A COMPASS AND TAPE.



- LEGEND**
- - Found Original Corner.
  - - Set 2 1/2" X 28" U.S.F.S. Aluminum Cap.
  - × - Found 2 1/2" X 28" B.L.M. Iron Post & Brass Cap Out Of Position.
  - ⊗ - Set 2 1/2" X 28" U.S.F.S. Aluminum Cap & Also Found 2 1/2" X 28" B.L.M. Iron Post & Brass Cap Out Of Position.
  - + - Calculated Position. NO Cap Set.
  - ▨ - Boundary Line Posted.

**FIELD BOOK REFERENCE**  
 BOOKS 1, 2, 3 & 4 BLODGETT 002 CADASTRAL F.S. CONTRACT NO. 53-04H1-0-7710N

**REFERENCE SURVEYS**  
 C.S. NO. 401  
 C.S. NO. 1742 A  
 C.S. NO. 4855

**GENERAL NOTE:**  
 EQUIPMENT USED DURING THIS SURVEY WAS A WILD T-16 AND A DI 35 DISTOMAT. ALL CALCULATIONS WERE DONE IN ACCORDANCE WITH THE B.L.M. MANUAL OF SURVEYING INSTRUCTIONS. ALL B.T.'S MARKED IN THIS SURVEY HAVE A BRASS WASHER MARKED LS 1854 NAILED TO THE LOWER BLAZE.

**SURVEYOR'S CERTIFICATE**  
 I, RAYMOND C. McWHINNEY, A REGISTERED LAND SURVEYOR IN THE STATE OF OREGON, HEREBY CERTIFY THAT THIS PLAT AND THE NOTES HEREON, OR ATTACHED, ARE A CORRECT REPRESENTATION OF A SURVEY I PERFORMED DURING NOVEMBER 1979/APRIL 1980, FOR THE U.S. FOREST SERVICE, IN ACCORDANCE WITH THE STATUTES OF THE STATE OF OREGON AND WITH THE ARTICLES OF MY CONTRACT.

*Raymond C. McWhinney*  
 Raymond C. McWhinney  
 Registered Land Surveyor  
 Oregon License 1854

REGISTERED PROFESSIONAL LAND SURVEYOR  
*Raymond C. McWhinney*  
 RAYMOND C. McWHINNEY  
 1854



SURVEY  
FOR  
U.S. DEPARTMENT OF AGRICULTURE  
FOREST SERVICE  
IN  
SECTION 5, TOWNSHIP 14 SOUTH,  
RANGE 11 WEST, WILLAMETTE MERIDIAN,  
LINCOLN COUNTY, OREGON  
  
BY  
REGIONAL CONSULTANTS, INC.  
2380 N.W. KINGS BLVD.  
CORVALLIS, OREGON 97330

**NOTES**

(A) CLOSING CORNER BETWEEN SECTIONS 5 AND 6. FOUND ORIGINAL CORNER (18" HEMLOCK BLOWN DOWN) WITH FRAGMENTARY SCRIBE MARKS AND ORIGINAL HEMLOCK BEARING TREE 30" DIAMETER WITH SCRIBE MARKS VISIBLE IN CUT OUT BLAZE RECORDED AS S44° E 32.3 FEET. TIED DOWN BEARING TREE AND CALCULATED POSITION FOR CLOSING CORNER USING RECORD THE FROM HEMLOCK BEARING TREE. SET 2 1/2" X 28" U.S.F.S. ALUMINUM CAP AT CALCULATED POSITION.

MARKED CAP	N 532 S 56155 E 120 W 1972	BEARING TREES: 38" DOUGLAS FIR MARKED T14SR11WCS5 BT S 12° E 26.2 FEET; 20" HEMLOCK (PREVIOUSLY MARKED BY B.L.M.) T14SR11WCS6 BT S 38° W 37.8 FEET.
------------	-------------------------------------	---

CORNER LANDS IN ROOTHOLE OF ORIGINAL TREE, LEFT 6" ABOVE GROUND. NEW BEARING TREES 30" HEMLOCK MARKED T14SR11WCS5 BT S 38° E 35.0 FEET; 20" HEMLOCK (PREVIOUSLY MARKED BY B.L.M.) T14SR11WCS6 BT S 26° W 57.8 FEET. ALSO SET 2 1/2" X 28" U.S.F.S. ALUMINUM CAP AT THE INTERSECTION OF THE STANDARD PARALLEL AND THE SECTION LINE BETWEEN SECTIONS 5 AND 6

MARKED CAP	N 532 S 56155 E 120 W 1972	BEARING TREES: 38" DOUGLAS FIR MARKED T14SR11WCS5 BT S 12° E 26.2 FEET; 20" HEMLOCK (PREVIOUSLY MARKED BY B.L.M.) T14SR11WCS6 BT S 38° W 37.8 FEET.
------------	-------------------------------------	---

ALSO FOUND BRASS CAP 6" ABOVE GROUND SET BY B.L.M. IN 1972 BY PROPORTIONATE MEASURE

MARKED CAP	N 532 S 56155 E 120 W 1972	BEARING TREES: 38" DOUGLAS FIR MARKED T14SR11WCS5 BT S 12° E 26.2 FEET; 20" HEMLOCK (PREVIOUSLY MARKED BY B.L.M.) T14SR11WCS6 BT S 38° W 37.8 FEET.
------------	-------------------------------------	---

(B) FOUND 2 1/2" X 28" IRON POST WITH BRASS CAP SET BY B.L.M. IN 1972. CAP WAS SET USING B.L.M. CLOSING CORNER INSTEAD OF ORIGINAL CLOSING CORNER. THIS PUTS THE B.L.M. CAP S 47° 10' 54" W 47.10 FEET FROM THE TRUE POSITION OF THE CORNER (CORNER NOT RESET).

MARKED CAP	N 532 S 56155 E 120 W 1972	BEARING TREES: 20" HEMLOCK MARKS T14SR11WCS6BT STILL VISIBLE S 22° W 29.0 FEET; 22" HEMLOCK MARKS T14SR11WCS5BT STILL VISIBLE S 18° E 12.5 FEET.
------------	-------------------------------------	--

(C) FOUND 2 1/2" X 28" IRON POST WITH BRASS CAP SET BY B.L.M. IN 1972. CAP IS 18" OUT OF GROUND, DIRT PULLED AWAY WHEN NEARBY TREE BLEW DOWN. CAP WAS SET USING THE B.L.M. CLOSING CORNER INSTEAD OF THE ORIGINAL CLOSING CORNER, THIS PUTS THE B.L.M. CAP S 43° 30' 58" W 17.57 FEET FROM THE TRUE POSITION OF THE CORNER (CORNER NOT RESET).

MARKED CAP	N 532 S 56155 E 120 W 1972	BEARING TREES: 42" SPRUCE MARKS 1/16 100 S 5 BT STILL VISIBLE S 80° E 24.4 FEET; 24" HEMLOCK MARKS 1/16 100 S 6 BT STILL VISIBLE N 65° W 19.8 FEET.
------------	-------------------------------------	---

(D) FOUND 2 1/2" X 28" IRON POST WITH BRASS CAP SET BY B.L.M. IN 1972. CAP WAS SET USING B.L.M. CLOSING CORNER INSTEAD OF THE ORIGINAL CLOSING CORNER, THIS PUTS THE B.L.M. CAP SOUTH 45° 26' 13" W 11.69 FEET FROM THE TRUE CORNER. THIS CAP IS AT ABOUT A 45° ANGLE PROBABLY HIT BY SKIDDER (CORNER NOT RESET).

MARKED CAP	N 532 S 56155 E 120 W 1972	BEARING TREES: 42" HEMLOCK MARKS 1/168055BT STILL VISIBLE N 89° E 73.9 FEET; 20" HEMLOCK MARKS 1/168056BT STILL VISIBLE N 37° W 89.8 FEET.
------------	-------------------------------------	--

(E) FOUND 2 1/2" X 28" IRON POST WITH BRASS CAP SET BY B.L.M. IN 1972. CAP WAS SET USING THE CLOSING CORNER SET BY THE B.L.M. INSTEAD OF THE ORIGINAL CLOSING CORNER, THIS PUTS THE B.L.M. CAP S 61° 08'41" W 7.50 FEET FROM THE TRUE

POSITION OF THE CORNER (CORNER NOT RESET).

MARKED CAP	N 532 S 56155 E 120 W 1972	BEARING TREES: 16" HEMLOCK MARKS N 1/1655BT STILL VISIBLE S 70° E 9.9 FEET; 18" HEMLOCK STUMP MARKS N 1/16 S6BT STILL VISIBLE S 78° W 33.7 FEET.
------------	-------------------------------------	--

(F) FOUND 2 1/2" X 28" IRON POST WITH BRASS CAP 6" ABOVE GROUND SET IN 1966 BY THE B.L.M. FROM ORIGINAL BEARING TREES

MARKED CAP	N 532 S 56155 E 120 W 1972	BEARING TREES: 16" HEMLOCK MARKS N 1/1655BT STILL VISIBLE S 70° E 9.9 FEET; 18" HEMLOCK STUMP MARKS N 1/16 S6BT STILL VISIBLE S 78° W 33.7 FEET.
------------	-------------------------------------	--

(G) FOUND 2 1/2" X 28" IRON POST WITH BRASS CAP 6" ABOVE GROUND SET IN 1966 BY THE B.L.M. FROM ORIGINAL BEARING TREES

MARKED CAP	N 532 S 56155 E 120 W 1972	BEARING TREES: 16" HEMLOCK MARKS N 1/1655BT STILL VISIBLE S 70° E 9.9 FEET; 18" HEMLOCK STUMP MARKS N 1/16 S6BT STILL VISIBLE S 78° W 33.7 FEET.
------------	-------------------------------------	--

(H) 1/4 CORNER BETWEEN SECTIONS 5 AND 6. NO EVIDENCE OF ORIGINAL CORNER FOUND. SET 2-1/2" X 28" USFS ALUMINUM CAP 6" ABOVE GROUND. POSITION FIGURED BY PROPORTIONATE MEASURE.

(I) 1/4 CORNER BETWEEN SECTIONS 5 AND 8. NO EVIDENCE OF ORIGINAL CORNER FOUND. SET 2-1/2" X 28" USFS ALUMINUM CAP 6" ABOVE GROUND. POSITION FIGURED BY PROPORTIONATE MEASURE.

(J) 1/4 CORNER BETWEEN SECTIONS 5 AND 8. NO EVIDENCE OF ORIGINAL CORNER FOUND. SET 2-1/2" X 28" USFS ALUMINUM CAP 6" ABOVE GROUND. POSITION FIGURED BY PROPORTIONATE MEASURE.

(K) 1/4 CORNER BETWEEN SECTIONS 5 AND 8. NO EVIDENCE OF ORIGINAL CORNER FOUND. SET 2-1/2" X 28" USFS ALUMINUM CAP 6" ABOVE GROUND. POSITION FIGURED BY PROPORTIONATE MEASURE.

(L) 1/4 CORNER BETWEEN SECTIONS 5 AND 8. NO EVIDENCE OF ORIGINAL CORNER FOUND. SET 2-1/2" X 28" USFS ALUMINUM CAP 6" ABOVE GROUND. POSITION FIGURED BY PROPORTIONATE MEASURE.

(M) 1/4 CORNER BETWEEN SECTIONS 5 AND 8. NO EVIDENCE OF ORIGINAL CORNER FOUND. SET 2-1/2" X 28" USFS ALUMINUM CAP 6" ABOVE GROUND. POSITION FIGURED BY PROPORTIONATE MEASURE.

(N) 1/4 CORNER BETWEEN SECTIONS 5 AND 8. NO EVIDENCE OF ORIGINAL CORNER FOUND. SET 2-1/2" X 28" USFS ALUMINUM CAP 6" ABOVE GROUND. POSITION FIGURED BY PROPORTIONATE MEASURE.

(O) 1/4 CORNER BETWEEN SECTIONS 5 AND 8. NO EVIDENCE OF ORIGINAL CORNER FOUND. SET 2-1/2" X 28" USFS ALUMINUM CAP 6" ABOVE GROUND. POSITION FIGURED BY PROPORTIONATE MEASURE.

(P) 1/4 CORNER BETWEEN SECTIONS 5 AND 8. NO EVIDENCE OF ORIGINAL CORNER FOUND. SET 2-1/2" X 28" USFS ALUMINUM CAP 6" ABOVE GROUND. POSITION FIGURED BY PROPORTIONATE MEASURE.

(Q) 1/4 CORNER BETWEEN SECTIONS 5 AND 8. NO EVIDENCE OF ORIGINAL CORNER FOUND. SET 2-1/2" X 28" USFS ALUMINUM CAP 6" ABOVE GROUND. POSITION FIGURED BY PROPORTIONATE MEASURE.

(R) 1/4 CORNER BETWEEN SECTIONS 5 AND 8. NO EVIDENCE OF ORIGINAL CORNER FOUND. SET 2-1/2" X 28" USFS ALUMINUM CAP 6" ABOVE GROUND. POSITION FIGURED BY PROPORTIONATE MEASURE.

BEARING TREES: 12" HEMLOCK WITH MARKS T14SR11WS4BT PARTLY VISIBLE IN A PARTLY HEALED BLAZE N70° E 26.1 FT. 12" HEMLOCK WITH THE MARKS T14SR11WS9 PARTLY VISIBLE IN A PARTLY HEALED BLAZE S34° E 13.9 FT. 11" HEMLOCK WITH THE MARKS T14SR11WS8BT PARTLY VISIBLE IN A PARTLY HEALED BLAZE S40° W 11.6 FT. 12" HEMLOCK WITH THE MARKS T14SR11WS5BT PARTLY VISIBLE IN A PARTLY HEALED BLAZE N23° W 8.6 FT.

(S) 1/4 CORNER BETWEEN SECTIONS 4 AND 5. NO EVIDENCE OF ORIGINAL FOUND. SET 2-1/2" X 28" USFS ALUMINUM CAP 6" ABOVE GROUND LEVEL. POSITION FIGURED BY PROPORTIONATE MEASURE.

(T) 1/4 CORNER BETWEEN SECTIONS 4 AND 5. NO EVIDENCE OF ORIGINAL FOUND. SET 2-1/2" X 28" USFS ALUMINUM CAP 6" ABOVE GROUND LEVEL. POSITION FIGURED BY PROPORTIONATE MEASURE.

(U) 1/4 CORNER BETWEEN SECTIONS 4 AND 5. NO EVIDENCE OF ORIGINAL FOUND. SET 2-1/2" X 28" USFS ALUMINUM CAP 6" ABOVE GROUND LEVEL. POSITION FIGURED BY PROPORTIONATE MEASURE.

(V) 1/4 CORNER BETWEEN SECTIONS 4 AND 5. NO EVIDENCE OF ORIGINAL FOUND. SET 2-1/2" X 28" USFS ALUMINUM CAP 6" ABOVE GROUND LEVEL. POSITION FIGURED BY PROPORTIONATE MEASURE.

(W) 1/4 CORNER BETWEEN SECTIONS 4 AND 5. NO EVIDENCE OF ORIGINAL FOUND. SET 2-1/2" X 28" USFS ALUMINUM CAP 6" ABOVE GROUND LEVEL. POSITION FIGURED BY PROPORTIONATE MEASURE.

(X) 1/4 CORNER BETWEEN SECTIONS 4 AND 5. NO EVIDENCE OF ORIGINAL FOUND. SET 2-1/2" X 28" USFS ALUMINUM CAP 6" ABOVE GROUND LEVEL. POSITION FIGURED BY PROPORTIONATE MEASURE.

(Y) 1/4 CORNER BETWEEN SECTIONS 4 AND 5. NO EVIDENCE OF ORIGINAL FOUND. SET 2-1/2" X 28" USFS ALUMINUM CAP 6" ABOVE GROUND LEVEL. POSITION FIGURED BY PROPORTIONATE MEASURE.

(Z) 1/4 CORNER BETWEEN SECTIONS 4 AND 5. NO EVIDENCE OF ORIGINAL FOUND. SET 2-1/2" X 28" USFS ALUMINUM CAP 6" ABOVE GROUND LEVEL. POSITION FIGURED BY PROPORTIONATE MEASURE.

(AA) 1/4 CORNER BETWEEN SECTIONS 4 AND 5. NO EVIDENCE OF ORIGINAL FOUND. SET 2-1/2" X 28" USFS ALUMINUM CAP 6" ABOVE GROUND LEVEL. POSITION FIGURED BY PROPORTIONATE MEASURE.

(AB) 1/4 CORNER BETWEEN SECTIONS 4 AND 5. NO EVIDENCE OF ORIGINAL FOUND. SET 2-1/2" X 28" USFS ALUMINUM CAP 6" ABOVE GROUND LEVEL. POSITION FIGURED BY PROPORTIONATE MEASURE.

(AC) 1/4 CORNER BETWEEN SECTIONS 4 AND 5. NO EVIDENCE OF ORIGINAL FOUND. SET 2-1/2" X 28" USFS ALUMINUM CAP 6" ABOVE GROUND LEVEL. POSITION FIGURED BY PROPORTIONATE MEASURE.

(AD) 1/4 CORNER BETWEEN SECTIONS 4 AND 5. NO EVIDENCE OF ORIGINAL FOUND. SET 2-1/2" X 28" USFS ALUMINUM CAP 6" ABOVE GROUND LEVEL. POSITION FIGURED BY PROPORTIONATE MEASURE.

(AE) 1/4 CORNER BETWEEN SECTIONS 4 AND 5. NO EVIDENCE OF ORIGINAL FOUND. SET 2-1/2" X 28" USFS ALUMINUM CAP 6" ABOVE GROUND LEVEL. POSITION FIGURED BY PROPORTIONATE MEASURE.

(AF) 1/4 CORNER BETWEEN SECTIONS 4 AND 5. NO EVIDENCE OF ORIGINAL FOUND. SET 2-1/2" X 28" USFS ALUMINUM CAP 6" ABOVE GROUND LEVEL. POSITION FIGURED BY PROPORTIONATE MEASURE.

(AG) 1/4 CORNER BETWEEN SECTIONS 4 AND 5. NO EVIDENCE OF ORIGINAL FOUND. SET 2-1/2" X 28" USFS ALUMINUM CAP 6" ABOVE GROUND LEVEL. POSITION FIGURED BY PROPORTIONATE MEASURE.

(AH) 1/4 CORNER BETWEEN SECTIONS 4 AND 5. NO EVIDENCE OF ORIGINAL FOUND. SET 2-1/2" X 28" USFS ALUMINUM CAP 6" ABOVE GROUND LEVEL. POSITION FIGURED BY PROPORTIONATE MEASURE.

(AI) 1/4 CORNER BETWEEN SECTIONS 4 AND 5. NO EVIDENCE OF ORIGINAL FOUND. SET 2-1/2" X 28" USFS ALUMINUM CAP 6" ABOVE GROUND LEVEL. POSITION FIGURED BY PROPORTIONATE MEASURE.

(AJ) 1/4 CORNER BETWEEN SECTIONS 4 AND 5. NO EVIDENCE OF ORIGINAL FOUND. SET 2-1/2" X 28" USFS ALUMINUM CAP 6" ABOVE GROUND LEVEL. POSITION FIGURED BY PROPORTIONATE MEASURE.

(AK) 1/4 CORNER BETWEEN SECTIONS 4 AND 5. NO EVIDENCE OF ORIGINAL FOUND. SET 2-1/2" X 28" USFS ALUMINUM CAP 6" ABOVE GROUND LEVEL. POSITION FIGURED BY PROPORTIONATE MEASURE.

(AL) 1/4 CORNER BETWEEN SECTIONS 4 AND 5. NO EVIDENCE OF ORIGINAL FOUND. SET 2-1/2" X 28" USFS ALUMINUM CAP 6" ABOVE GROUND LEVEL. POSITION FIGURED BY PROPORTIONATE MEASURE.

(AM) 1/4 CORNER BETWEEN SECTIONS 4 AND 5. NO EVIDENCE OF ORIGINAL FOUND. SET 2-1/2" X 28" USFS ALUMINUM CAP 6" ABOVE GROUND LEVEL. POSITION FIGURED BY PROPORTIONATE MEASURE.

(AN) 1/4 CORNER BETWEEN SECTIONS 4 AND 5. NO EVIDENCE OF ORIGINAL FOUND. SET 2-1/2" X 28" USFS ALUMINUM CAP 6" ABOVE GROUND LEVEL. POSITION FIGURED BY PROPORTIONATE MEASURE.

(AO) 1/4 CORNER BETWEEN SECTIONS 4 AND 5. NO EVIDENCE OF ORIGINAL FOUND. SET 2-1/2" X 28" USFS ALUMINUM CAP 6" ABOVE GROUND LEVEL. POSITION FIGURED BY PROPORTIONATE MEASURE.

(AP) 1/4 CORNER BETWEEN SECTIONS 4 AND 5. NO EVIDENCE OF ORIGINAL FOUND. SET 2-1/2" X 28" USFS ALUMINUM CAP 6" ABOVE GROUND LEVEL. POSITION FIGURED BY PROPORTIONATE MEASURE.

(AQ) 1/4 CORNER BETWEEN SECTIONS 4 AND 5. NO EVIDENCE OF ORIGINAL FOUND. SET 2-1/2" X 28" USFS ALUMINUM CAP 6" ABOVE GROUND LEVEL. POSITION FIGURED BY PROPORTIONATE MEASURE.

(AR) 1/4 CORNER BETWEEN SECTIONS 4 AND 5. NO EVIDENCE OF ORIGINAL FOUND. SET 2-1/2" X 28" USFS ALUMINUM CAP 6" ABOVE GROUND LEVEL. POSITION FIGURED BY PROPORTIONATE MEASURE.

(AS) 1/4 CORNER BETWEEN SECTIONS 4 AND 5. NO EVIDENCE OF ORIGINAL FOUND. SET 2-1/2" X 28" USFS ALUMINUM CAP 6" ABOVE GROUND LEVEL. POSITION FIGURED BY PROPORTIONATE MEASURE.

(AT) 1/4 CORNER BETWEEN SECTIONS 4 AND 5. NO EVIDENCE OF ORIGINAL FOUND. SET 2-1/2" X 28" USFS ALUMINUM CAP 6" ABOVE GROUND LEVEL. POSITION FIGURED BY PROPORTIONATE MEASURE.

(AU) 1/4 CORNER BETWEEN SECTIONS 4 AND 5. NO EVIDENCE OF ORIGINAL FOUND. SET 2-1/2" X 28" USFS ALUMINUM CAP 6" ABOVE GROUND LEVEL. POSITION FIGURED BY PROPORTIONATE MEASURE.

(AV) 1/4 CORNER BETWEEN SECTIONS 4 AND 5. NO EVIDENCE OF ORIGINAL FOUND. SET 2-1/2" X 28" USFS ALUMINUM CAP 6" ABOVE GROUND LEVEL. POSITION FIGURED BY PROPORTIONATE MEASURE.

(AW) 1/4 CORNER BETWEEN SECTIONS 4 AND 5. NO EVIDENCE OF ORIGINAL FOUND. SET 2-1/2" X 28" USFS ALUMINUM CAP 6" ABOVE GROUND LEVEL. POSITION FIGURED BY PROPORTIONATE MEASURE.

(AX) 1/4 CORNER BETWEEN SECTIONS 4 AND 5. NO EVIDENCE OF ORIGINAL FOUND. SET 2-1/2" X 28" USFS ALUMINUM CAP 6" ABOVE GROUND LEVEL. POSITION FIGURED BY PROPORTIONATE MEASURE.

(AY) 1/4 CORNER BETWEEN SECTIONS 4 AND 5. NO EVIDENCE OF ORIGINAL FOUND. SET 2-1/2" X 28" USFS ALUMINUM CAP 6" ABOVE GROUND LEVEL. POSITION FIGURED BY PROPORTIONATE MEASURE.

(AZ) 1/4 CORNER BETWEEN SECTIONS 4 AND 5. NO EVIDENCE OF ORIGINAL FOUND. SET 2-1/2" X 28" USFS ALUMINUM CAP 6" ABOVE GROUND LEVEL. POSITION FIGURED BY PROPORTIONATE MEASURE.

(BA) 1/4 CORNER BETWEEN SECTIONS 4 AND 5. NO EVIDENCE OF ORIGINAL FOUND. SET 2-1/2" X 28" USFS ALUMINUM CAP 6" ABOVE GROUND LEVEL. POSITION FIGURED BY PROPORTIONATE MEASURE.

(BB) 1/4 CORNER BETWEEN SECTIONS 4 AND 5. NO EVIDENCE OF ORIGINAL FOUND. SET 2-1/2" X 28" USFS ALUMINUM CAP 6" ABOVE GROUND LEVEL. POSITION FIGURED BY PROPORTIONATE MEASURE.

(BC) 1/4 CORNER BETWEEN SECTIONS 4 AND 5. NO EVIDENCE OF ORIGINAL FOUND. SET 2-1/2" X 28" USFS ALUMINUM CAP 6" ABOVE GROUND LEVEL. POSITION FIGURED BY PROPORTIONATE MEASURE.

(BD) 1/4 CORNER BETWEEN SECTIONS 4 AND 5. NO EVIDENCE OF ORIGINAL FOUND. SET 2-1/2" X 28" USFS ALUMINUM CAP 6" ABOVE GROUND LEVEL. POSITION FIGURED BY PROPORTIONATE MEASURE.

(BE) 1/4 CORNER BETWEEN SECTIONS 4 AND 5. NO EVIDENCE OF ORIGINAL FOUND. SET 2-1/2" X 28" USFS ALUMINUM CAP 6" ABOVE GROUND LEVEL. POSITION FIGURED BY PROPORTIONATE MEASURE.

(BF) 1/4 CORNER BETWEEN SECTIONS 4 AND 5. NO EVIDENCE OF ORIGINAL FOUND. SET 2-1/2" X 28" USFS ALUMINUM CAP 6" ABOVE GROUND LEVEL. POSITION FIGURED BY PROPORTIONATE MEASURE.

(BG) 1/4 CORNER BETWEEN SECTIONS 4 AND 5. NO EVIDENCE OF ORIGINAL FOUND. SET 2-1/2" X 28" USFS ALUMINUM CAP 6" ABOVE GROUND LEVEL. POSITION FIGURED BY PROPORTIONATE MEASURE.

